



**The Ironclad® Vandal-Resistant fixture** uses an LED high efficiency light engine with a cool light that simulates daylight. The incorporated count light LED module can be turned on and off as needed. Designed to withstand extreme abuse by using materials that are virtually indestructible in order to eliminate, or drastically delay, tampering or removal of a light fixture within a prison cell.

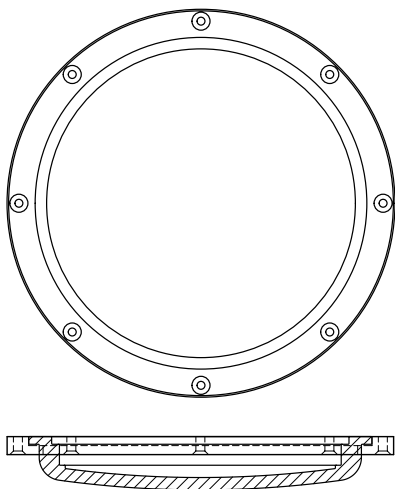
### **Product Specifications**

- Lumens: 3600 (35W, 42W)
- Night Light Lumens: 680
- Light Engine CCT: 5000K, 4000K, 3500K, 2700K
- Night Light CCT: 2700K
- Life Hours: L70>75,000 Hours; Projected >100,000 Hours
- Footcandles: 35 ftc at the desk level; 22 ftc at the floor
- Voltage: Universal 120-277V
- Weight: 7.9 lbs.
- Warranty: 5 year limited warranty
- Dimensions: 12.25" diameter x 1.9" tall

**Certifications:** cULus, UL Wet Location



Manufactured in America with globally and domestically sourced components



### Fixture construction

- One piece Mounting Ring - .500" thick 304 Stainless Steel
- Lens - .400" thick cast, diffused translucent, Highly Engineered Polyurethane. Shore hardness D80+, tensile strength 5,400 psi, impact strength 55 in. lbs./ in.
- IK10 Impact Rating
- Aluminum heat sink to maintain thermal management
- Installation - Anchored flush onto ceiling with (8) recessed tamper-proof 1/4" concrete drive anchors or spike anchors
- Hard wired direct to AC current; eliminating any failure points via driver
- No accessible parts or hinges
- No rusting or peeling paint

Shat·R·Shield recognized the need for an LED Fixture to eliminate, or drastically delay, tampering or removal of a light fixture within a prison cell. The Ironclad® VR Pro offers adequate footcandles for a light output with wall-to-wall coverage, along with a count light per DOC guidelines for a revolutionary new vandal-resistant LED light fixture built to perform for years to come.

\*Illuminating Engineering Society (IES), American Correctional Association (ACA) and Federal Bureau of Prisons (FBOP) recommended footcandle level is 20 ftc at the desk surface.